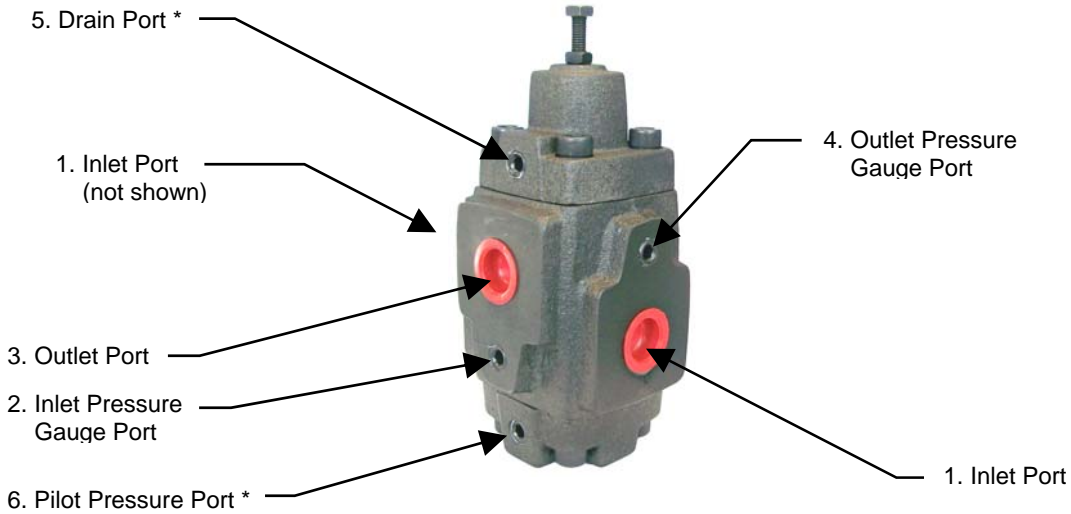
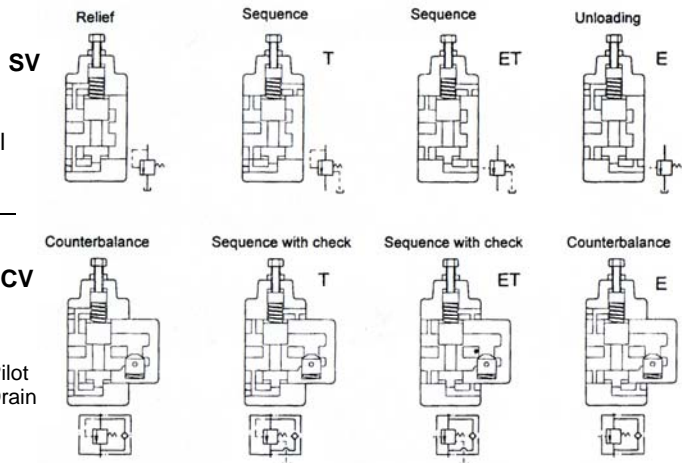


## SV & SCV PORT CONNECTIONS



- 1. Inlet Port:** There are two inlet ports located 180° from each other. One may be plugged, or system pressure may flow through, depending on the requirements of the circuit design.
- 2. Inlet Pressure Gauge Port:** The inlet gauge port is located just below the outlet port.
- 3. Outlet Port:** There is one outlet port located on the side of the valve between the two inlet ports. The outlet port is positioned above the centerline of the two inlet ports.
- 4. Outlet Pressure Gauge Port:** The outlet gauge port is located just above the inlet port.
- 5. Drain Port:** The drain port is located on the top section of the valve where the adjustment screw is.
- 6. Pilot Pressure Port:** The pilot pressure port is located on the bottom section of the valve.

\* The Pilot Pressure Port and the Drain Port may be 90° from the positions in the product photo depending on whether the valve is configured to be internally or externally piloted or drained. The diagrams to the right are representative of the various internal flow paths and therefore the port orientation. (The product photo depicts internal pilot and drain.)



E = External Pilot  
T = External Drain

Northman Fluid Power  
739 Kimberly Drive  
Carol Stream, IL 60188

PH: 630-588-8488  
FX: 630-588-8487

[www.northmanfp.com](http://www.northmanfp.com)