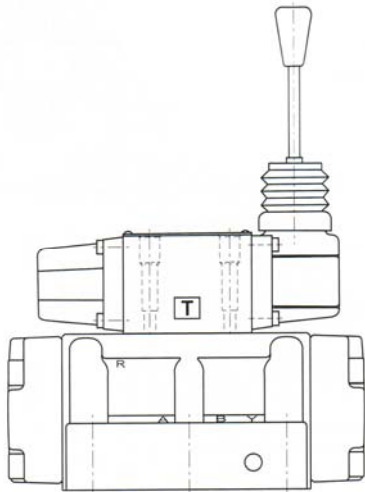


Get a Handle on Your Directional Control!



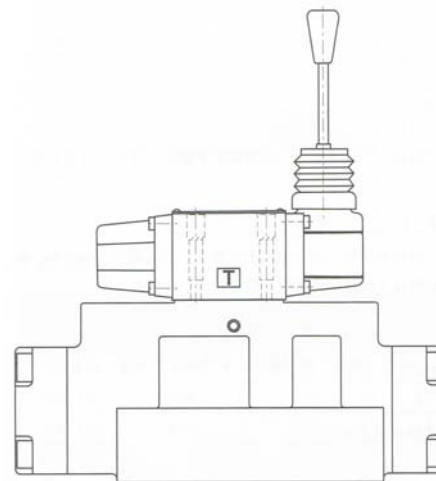
HD-G04 (NFPA D07 Size)

**We have expanded our
Manually Operated
Directional Control Valve Line**

Available Now ...

**Manual Control for the Larger Pilot-
Operated NFPA D07 and D08 Sizes**

**See the following two pages
for spool configuration
availability and model codes.**

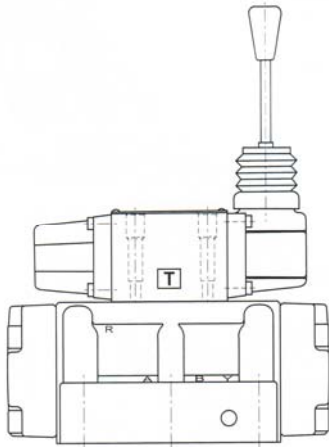


HD-G06 (NFPA D08 Size)

And as always ...

***THANK YOU FOR THINKING OF US FOR YOUR
HYDRAULIC VALVE AND PUMP REQUIREMENTS!***

PRODUCT INFORMATION SHEET
SERIES HD-G04
Directional Control Valve



Manually Operated Valve
Subplate Mount
NFPA Size D07

80 GPM Rated Flow
3000 PSI Maximum Pressure

Available now! Our Series G04 valve (NFPA Size D07) is now available with a manual hand lever valve. It comes complete with a mounting bolt kit.

Need a single station subplate? See our selection on line: <http://www.northmanfp.com/pdf/Subplate04.pdf>

Spools

B2S	
B3S	
C2	
C3	
C4	
C40	
C5	
C6	
C8	
C9	

Model Code

HD - G 04 - 3 C2 - **
1 2 3 4 5 6

1 **HD:** High Pressure, High Flow Manual Directional Control Valve

2 **G:** Subplate Mounted

3 **04:** Interface 04
NFPA D07 Size / ISO 4401-07 / CETOP 7 / NG 16

4 **Positions**
2: 2-Position Valve
3: 3-Position Valve

5 **Spool Type**
B2S, B3S (2-Position)
C2, C3, C4, C40,
C5, C6, C8, C9 (3-Position)

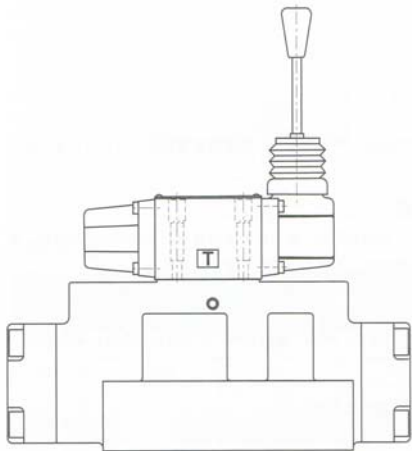
6 **Design Number**

739 Kimberly Drive
Carol Stream, IL 60181

Ph: 630-588-8488
Fx: 630-588-8487

inquiry@northmanfp.com
www.northmanfp.com

Feb. 2009



PRODUCT INFORMATION SHEET
SERIES HD-G06
Directional Control Valve

Manually Operated Valve
Subplate Mount
NFPA Size D08

133 GPM Rated Flow
3000 PSI Maximum Pressure

Available now! Our Series G06 valve (NFPA Size D08) is now available with a manual hand lever valve. It comes complete with a mounting bolt kit.

Need a single station subplate? See our selection on line: <http://www.northmanfp.com/pdf/Subplate06.pdf>

Spools

B2	
B3	
B20	
C2	
C3	
C4	
C40	
C5	
C6	
C60	
C7	
C8	
C9	

Model Code

HD - G 06 - 3 C2 - **
1 2 3 4 5 6

1 **HD:** High Pressure, High Flow Manual Directional Control Valve

2 **G:** Subplate Mounted

3 **06:** Interface 06
NFPA D08 Size / ISO 4401-08 / CETOP 8 / NG 25

739 Kimberly Drive
Carol Stream, IL 60181

inquiry@northmanfp.com
www.northmanfp.com

4 **Positions**
2: 2-Position Valve
3: 3-Position Valve

5 **Spool Type**
B2, B20, B3 (2-Position)
C2, C3, C4, C40, C5, C6, C60, C7, C8, C9 (3-Position)

6 **Design Number**

Ph: 630-588-8488
Fx: 630-588-8487

Feb. 2009