

## **PRODUCT SPOTLIGHT COUNTERBALANCE VALVE**

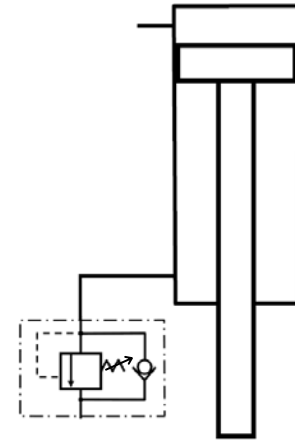


### **The Series . . .**

Our counterbalance valve is available in two series -  
SCV-T Threaded Port  
SCV-G Subplate Mounted

### **How It Works . . .**

The counterbalance valve maintains a back-pressure on a vertical mounted cylinder so that the load doesn't fall freely of its own weight. The valve is installed between the cylinder port and the directional control valve, with pressure setting of



the counterbalance valve adjusted to be just high enough to keep the cylinder load from falling.

When the cylinder is controlled to move against the counterbalance valve, the pressure rises to overcome the closed condition of the valve and the oil flow path is opened to tank. In the reverse, when the cylinder is controlled in the opposite direction, the oil path bypasses the valve over the internal free flow check valve.

If it is desired to remove the back-pressure at the cylinder port when the cylinder is in movement, specify the external pilot option for remote operation "-E".

**Application Tip**  
Put the SCV-T at the source -  
Close couple it to the cylinder.  
Best overall control and protection

### **Specifications . . .**

3000 Maximum Pressure Rating • Flows to 66 GPM • Three Adjustable Ranges; 250-500 PSI, 500-1000 PSI, 1000-2000 PSI • Subplate Mounting or Ports to 1-1/4" NPT • Internal or External Pilot Pressure and Drain Operations • Gauge port.

Check out complete features on the catalog page:

<http://www.northmanfp.com/pdf/H&HCPressureControlValve.pdf>

Wishing you the best,  
The Staff at Northman Fluid Power

[inquiry@northmanfp.com](mailto:inquiry@northmanfp.com)