

***We Call It a "Lift Valve"  
You Can Call It a Real Convenience!***



***What It Is . . .***

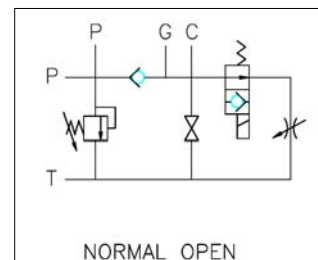
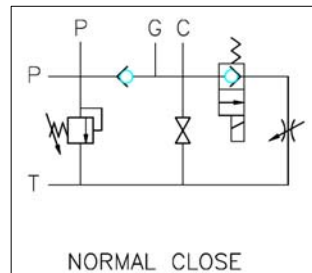
This Lift Valve combines four functions in one body.

It's a **Relief Valve**, a **Check Valve**, a **Flow Control Valve**, and a **Solenoid Directional Control Valve** - all integrated into a complete circuit!

Builders of **Lift Machinery** or machinery otherwise operating a **Single-Acting Cylinder** find this valve particularly useful.

***How It Works . . .***

Pressurized oil will flow directly to the cylinder in the **Normally Closed** version to extend it. (The relief valve protects the system from over-pressurization.) When the solenoid is actuated, oil from the pump and cylinder is routed to tank, allowing the single-acting cylinder to retract at the speed set by the meter-out flow control valve. De-activating the solenoid will again extend the cylinder.



The **Normally Open** circuit works in reverse, with the cylinder extending when the solenoid is actuated, and retracting when de-actuated.

***Specifications . . .***

This useful valve handles flows to 5.3 GPM and pressures to 3,000 PSI. Check out the rest of the features on the catalog page: <http://www.northmanfp.com/pdf/LiftValve.pdf>

Wishing you the best,  
The Staff at Northman Fluid Power  
[inquiry@northmanfp.com](mailto:inquiry@northmanfp.com)